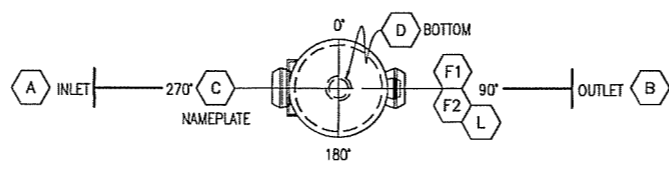


ELEVATION VIEW  
SCALE 1:10

END VIEW 'A-A'  
SCALE 1:10



ORIENTATION VIEW 'B-B'  
SCALE 1:10

LIST OF MATERIALS

ITEM	QTY	DESCRIPTION	MATERIAL
1	1	SHELL: 8" PIPE SMLS, SCH. XH x 5'-1 3/8" LG.	BBE SA-106B
2	1	BOOT: 8" PIPE SMLS, SCH. XH x 2'-4 13/16" LG.	BBE SA-106B
3			
4	1	4" PIPE SMLS, SCH. 80 x 11 9/16" LG.	BBE SA-106B
5			
6	1	HEAD: 8" WELD CAP, SCH. XH	SA-234 WPB
7			
8			
9			
10	2	4"-600# RFWN SCH. 80 BORE	SA-105N
11			
12			
13			
14			
15	2	8" x 4" SCH. XH CONC. REDUCER, BW	SA-234 WPB
16	1	8" SCH. XH TEE BW	SA-234 WPB
17			
18			
19			
20			
21	2	2"-3000# TOL ON B"	SA-105
22			
23	1	1"-3000# TOL ON FLAT	SA-105
24	4	3/4"-3000# TOL ON B"	SA-105
25			
26			
27			
28			
29			
30			
31	1	NAME PLATE BRACKET 9 1/2" LG.	G-44W
32	1	MOSS FABRICATION/GEQUIP NAME PLATES	SS

PREVIOUS JOB#3834.

DESIGN DATA			
CONSTRUCTION:	ASME SEC VIII, DIV 1, UW-11(a)5(b), 2004 EDITION, 2005 ADDENDA		
DESIGN PRESSURE:	1415 PSIG	9756 kPaq	
DESIGN TEMPERATURE:	150 deg F	66 deg C	
TEST PRESSURE:	2123 PSIG	14,635 kPaq	
M.D.M.T.:	-20 deg F @	1415 PSIG	-29 deg C @ 9756 kPaq
RADIOGRAPHY:	RT-2		
M.A.W.P.:	1415 PSIG @	150 deg F	9756 kPaq @ 66 deg C
C.A.:	1/16 in.	1.58 mm	SERVICE: SWEET
STRESS RELIEVE:	N/R		
SHIPPING WEIGHT:	570 lbs.	260 kg.	VOLUME: 3.45 cu. ft. 0.10 cu. m
SERIAL NUMBER:	3932-1, 2	YEAR BUILT:	2006
NUMBER REQ'D:	TWO (2)	C.R.N.:	R3927.21

REVISIONS			
0	ISSUED FOR APPROVAL	NOV.03'06	AB KM NOV.03'06
No	DESCRIPTION	DATE	DRAWN APP'D DATE

MOSS FABRICATION LTD.  
CALGARY mossfab@mossfabrication.com ALBERTA

DESIGN DATA			
TITLE:	4"x8" LUBE OIL SCRUBBER MODEL LS-408-1415, GEQUIP-- VESSEL ELEVATION AND DETAILS		
SIZE:	18 x 24	DATE:	APR.11'06
DRAWN:	AGL	CLIENT:	GEQUIP
SCALE:	SHOWN	PROJ. ENGR:	A. BALOCH
DRAWING NO.:	V3932-1	REV:	0

- NOTES:
- WELD PROCEDURE W1425.2 A.Q.P. #1214(S)
  - RADIUS ALL CORNERS INSIDE 1/8"
  - ALL DIMENSIONS ±1/8" UNLESS OTHERWISE NOTED
  - ALL BOLT HOLES TO STRADDLE CENTERLINE
  - USE TACK WELD PROCEDURE M1
  - IMPACT TEST NOT REQUIRED PER UG-20(1)(1-5)
  - THESE ARE GEQUIP STOCK UNITS, DO NOT HYDRO-TEST THEM TILL SOLD BY GEQUIP.
  - EXTERNAL SANDBLAST: SP-6 COMMERCIAL PRIMER: (1) S/C RUSTEX PAINT: (1) S/C INDUSTRIAL ENAMEL - WARM GREY
  - SEE DWG. D3832-1 FOR INTERNALS
  - REC'D UNDER DWG R3326-1 Rev0
  - SHIP 1-SET OF QC-PKG w/ VESSEL.

NOZZ	REMARKS	SIZE	QTY	RATE	TYPE	BORE	EX. PRJ.	INT. PRJ.	WELD DEF.	UPPER 'A'	INSIDE 'B'	REPAD 'C'
1	WPS # M2,M10	3/4"	1	3000#	TOL	-	-	-	4	3/8"	-	-
2	WPS # M1	3/4"	1	3000#	TOL	-	-	-	4	3/8"	-	-
3	WPS # M1	3/4"	1	3000#	TOL	-	-	-	4	3/8"	-	-
4	WPS # M2	3/4"	2	3000#	TOL	-	-	-	4	3/8"	-	-
5	WPS # M1	3/4"	1	3000#	TOL	-	-	-	4	3/8"	-	-
6	WPS # M1	3/4"	1	3000#	TOL	-	-	-	4	3/8"	-	-
F1/2	LG	3/4"	2	3000#	TOL	-	-	-	4	3/8"	-	-
D	DRAIN/INSP.	1"	1	3000#	TOL	-	-	-	4	3/8"	-	-
C	LC	2"	1	3000#	TOL	-	-	-	4	3/8"	-	-
B	OUTLET	4"	1	600#	RFWN	80	AS SHOWN	-	1	-	-	-
A	INLET	4"	1	600#	RFWN	80	AS SHOWN	-	1	-	-	-

DRAWING FILE: E:\volumes\3001-4000\3932\3932-1.dwg PLOTED BY: amling DATE: 11/26/2006 2:04:30PM